

T3 series

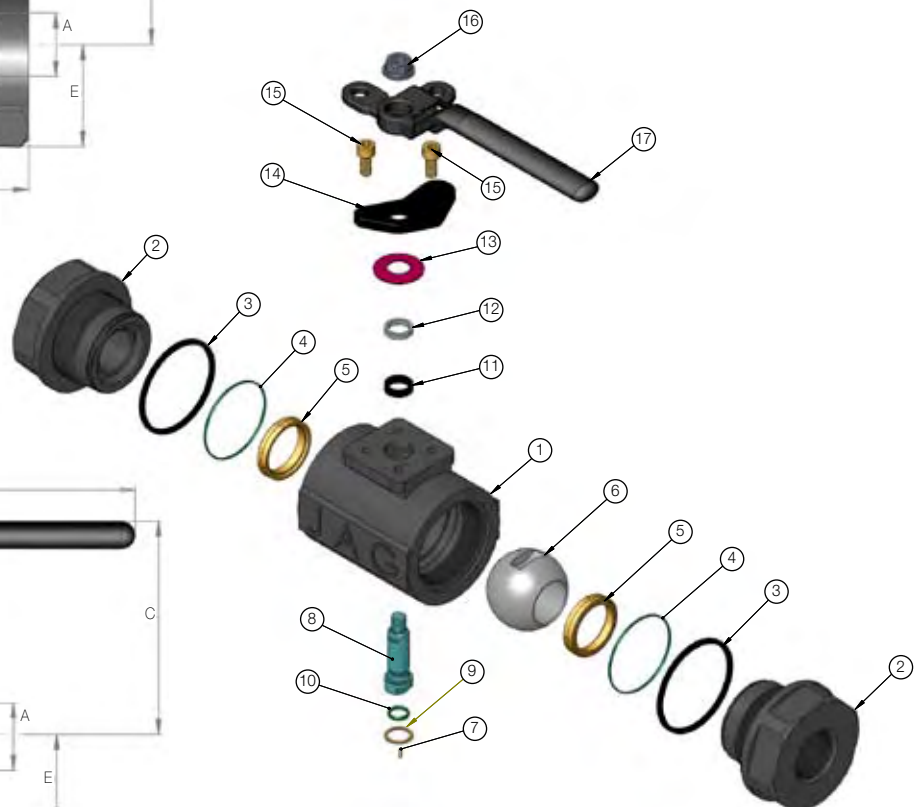
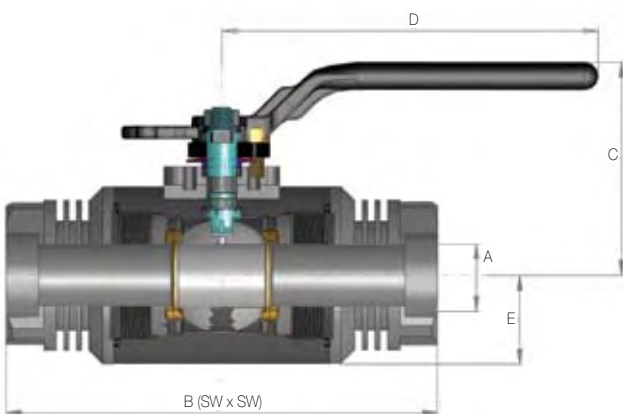
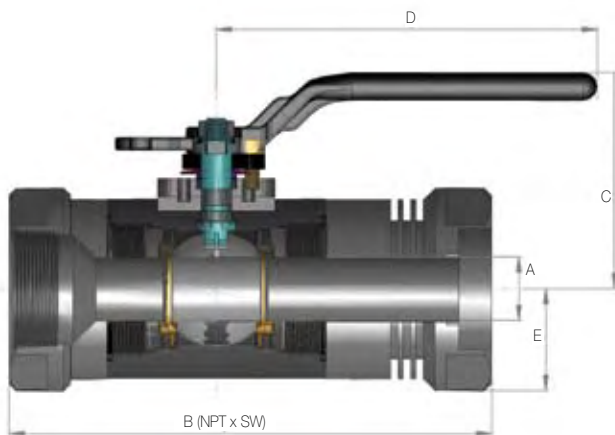
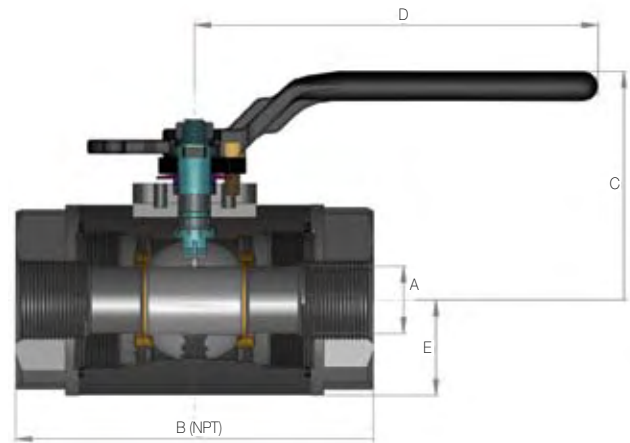


valves + vision + value

T3 class 1500 NPT/NPTxSW/SW/BW Ends

Product Features

- Forged Body and End Closures
- 3 Piece Threaded Construction
- In-line Weldable
- Dual Stem Seal
- Full or Reduced Port
- ASME B16.34
- NACE MR0175
- Blow-out Proof Stem
- Anti-static Design
- NPT Ends to ASME B1.20.1
- SW Ends to ASME B16.11
- BW Ends to ASME 16.25
- Fire Safe to API 607
- Locking Handle
- CE marking / PED to 97/23/EC



T3 NPT 1500 BOM						
No.	PART	QTY	STYLE / SERVICE			
			STANDARD	NACE	LOW TEMP NACE	STAINLESS STEEL
1	Body	1	A105	A105N	A350-LF2	A182-F316
2	End Cap	2	A105	A105N	A350-LF2	A479-316
3	Gasket	2	Graphite	Graphite	Graphite	Graphite
4	O-Ring	2	BUNA	Viton	Viton	Teflon
5	Seat	2	Delrin	Delrin	Delrin	TFM
6	Ball	1	304 SS	316 SS	316 SS	316 SS
7	Anti-Static Spring	1	304 SS	304 SS	304 SS	304 SS
8	Stem	1	AISI 4140	17-4 ph	17-4 ph	316 SS
9	Thrust Washer	1	Nylon	Nylon	Nylon	TFM
10	O-Ring	1	BUNA	Viton	Viton	Teflon
11	Stem Packing	1	Graphite	Graphite	Graphite	Graphite
12	Packing Follower	1	304 SS	304 SS	304 SS	304 SS
13	Belleville Washer	1	304 SS	304 SS	304 SS	304 SS
14	Gland Flange	1	WCB	WCB	WCB	304 SS
15	Gland Bolt	2	Stainless Steel	Stainless Steel	Stainless Steel	Stainless Steel
16	Handle Nut	1	CS Coated	CS Coated	CS Coated	304 SS
17	Handle	1	CS Coated	CS Coated	CS Coated	304 SS

T3 SW & SW x NPT 1500 BOM						
No.	PART	QTY	STYLE / SERVICE			
			STANDARD	NACE	LOW TEMP NACE	STAINLESS STEEL
1	Body	1	A105	A105N	A350-LF2	A182-F316
2	End Cap	2	A105	A105N	A350-LF2	A479-316
3	Gasket	2	Graphite	Graphite	Graphite	Graphite
4	O-Ring	2	Viton	Viton	Viton	Teflon
5	Seat	2	TFM	TFM	TFM	TFM
6	Ball	1	304 SS	316 SS	316 SS	316 SS
7	Anti-Static Spring	1	304 SS	304 SS	304 SS	304 SS
8	Stem	1	AISI 4140	17-4 ph	17-4 ph	17-4 ph
9	Thrust Washer	1	PEEK	PEEK	PEEK	PEEK
10	O-Ring	1	Viton	Viton	Viton	Teflon
11	Stem Packing	1	Graphite	Graphite	Graphite	Graphite
12	Packing Follower	1	304 SS	304 SS	304 SS	304 SS
13	Belleville Washer	1	304 SS	304 SS	304 SS	304 SS
14	Gland Flange	1	WCB	WCB	WCB	304 SS
15	Gland Bolt	2	Stainless Steel	Stainless Steel	Stainless Steel	Stainless Steel
16	Handle Nut	1	CS Coated	CS coated	CS Coated	304 SS
17	Handle	1	CS Coated	CS coated	CS Coated	304 SS

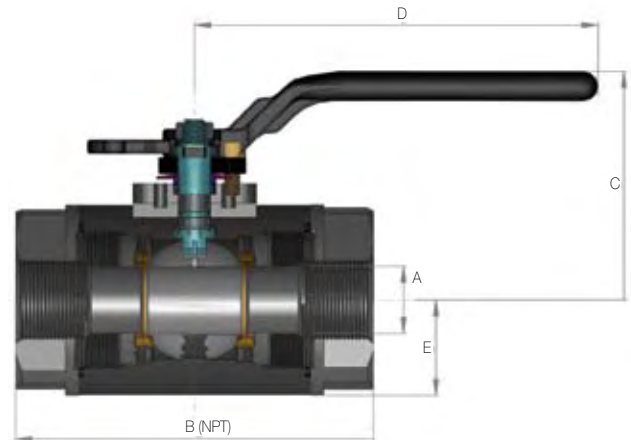
T3 NPT / NPT x SW / SW 1500 DIMS & WT.																						
Size		Bore	A		B (NPT)		B (NPTxSW)		B (SWxSW)		C		D		E		Weight (NPT)		Weight (NPTx-SW)		Weight (SW)	
in	mm	FP/ RP	in	mm	in	mm	in	mm	in	mm	in	mm	in	mm	in	mm	lbs.	kg.	lbs.	kg.	lbs.	kg.
1/4"	6.4	FP	0.50	12.7	3.86	98.0	4.44	112.5	5.00	127.0	3.26	82.8	6.50	165.1	0.87	22.0	3	1	3	1	4	2
3/8"	9.5	FP	0.50	12.7	3.86	98.0	4.44	112.5	5.00	127.0	3.26	82.8	6.50	165.1	0.87	22.0	3	1	3	1	4	2
1/2"	12.7	FP	0.50	12.7	3.86	98.0	4.44	112.5	5.00	127.0	3.26	82.8	6.50	165.1	0.87	22.0	3	1	3	1	4	2
3/4"	19.1	RP	0.50	12.7	4.37	111.0	5.57	141.5	6.75	172.0	3.26	82.8	6.50	165.1	0.87	22.0	4	2	4	2	7	3
		FP	0.75	19.0	4.25	107.9	5.50	140.0	6.75	172.0	3.67	93.2	8.46	214.9	1.18	30.0	6	3	5	2	7	3
1"	25.4	RP	0.75	19.0	4.50	114.3	5.63	143.0	6.75	172.0	3.67	93.2	8.46	214.9	1.18	30.0	6	3	7	3	8	4
		FP	1.00	25.4	5.25	133.3	6.00	152.5	6.75	172.0	3.93	99.8	8.46	214.9	1.58	40.0	9	4	9	5	10	5
1-1/4"	31.8	RP	1.00	19.0	6.43	163.3	7.46	190.0	8.50	217.0	3.93	99.8	8.46	214.9	1.58	40.0	10	4	12	6	14	7
		FP	1.50	25.4	6.26	159.0	7.38	188.0	8.50	217.0	5.30	134.6	10.00	254.0	1.58	40.0	18	8	19	9	20	9
1-1/2"	38.1	RP	1.00	19.0	6.43	163.3	7.46	190.0	8.50	217.0	3.93	99.8	8.46	214.9	1.58	40.0	11	5	12	5	14	6
		FP	1.50	25.4	6.26	159.0	7.38	188.0	8.50	217.0	5.30	134.6	10.00	254.0	1.58	40.0	17	8	19	9	20	9
2"	50.8	RP	1.50	38.0	6.75	171.4	7.63	194.5	8.50	217.0	5.30	134.6	10.00	254.0	1.79	45.5	17	8	19	9	21	10
		FP	2.00	50.8	6.25	158.8	8.05	204.5	9.85	250.0	6.30	160.0	12.40	315.0	1.79	45.5	29	13	31	14	33	15
3"	76.2	RP	2.00	50.8	10.00	254.0	11.38	289.0	12.75	324.0	6.30	160.0	12.40	315.0	2.40	61.0	39	18	45	21	51	23

Dimensions +/- 0.059 in (+/- 1.5mm)

T3 class 2500 NPT/NPTxSW/SW/BW Ends

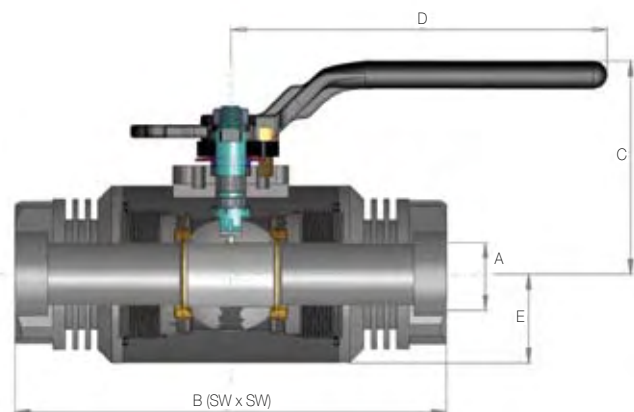
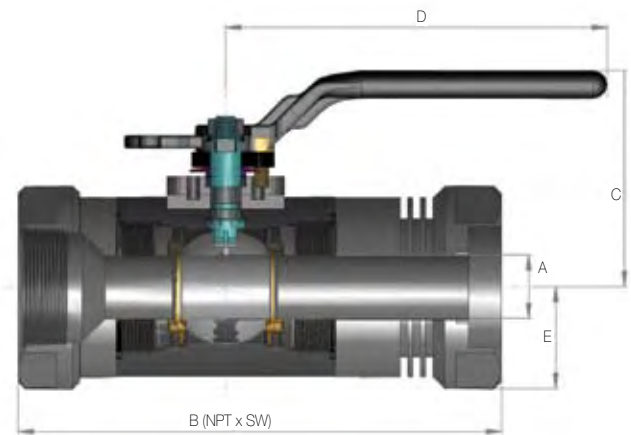
Product Features

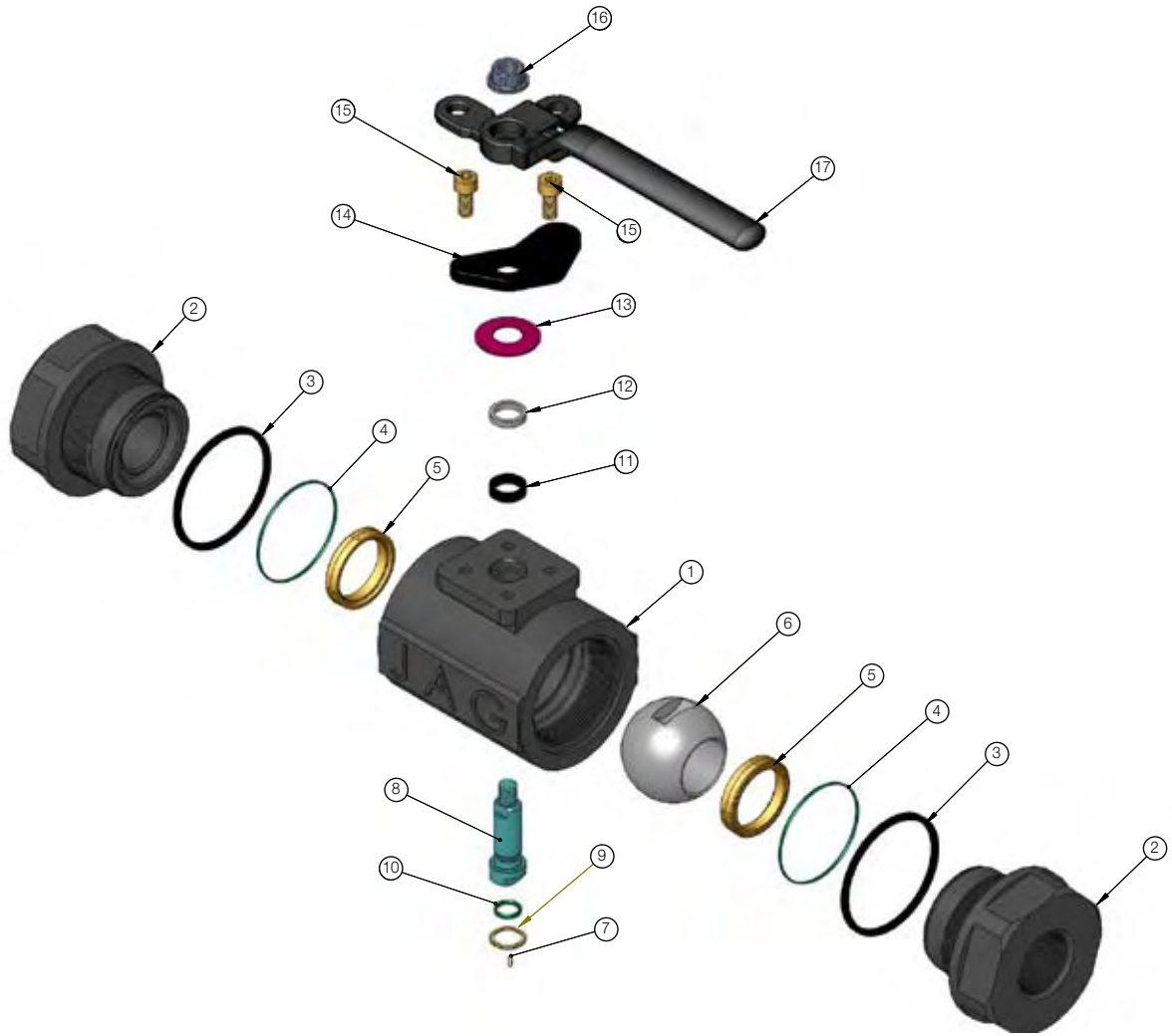
- Forged Body and End Closure
- 3 Piece Threaded Construction
- In-line Weldable
- Dual Stem Seal
- Full or Reduced Port
- ASME B16.34
- NACE MR0175
- Blow-out Proof Stem
- Anti-static Design
- NPT Ends to ASME B1.20.1
- SW Ends to ASME B16.11
- BW Ends to ASME 16.25
- Fire Safe to API 607
- Locking Handle
- CE marking / PED to 97/23/EC



*T3 valve also available in Hammer Union end configuration

T3 NPT/SW 2500 BOM						
No.	PART	QTY	Service			
			STANDARD	NACE	LOW TEMP NACE	STAINLESS STEEL
1	Body	1	A105	A105N	A350-LF2	A182-F316
2	End Cap	2	A105	A105N	A350-LF2	A479-316
3	Gasket	2	Graphite	Graphite	Graphite	Graphite
4	O-Ring	2	Viton	Viton	Viton	Teflon
5	Seat	2	PEEK	PEEK	PEEK	PEEK
6	Ball	1	17-4 ph	17-4 ph	17-4 ph	17-4 ph
7	Anti-Static Spring	1	304 SS	304 SS	304 SS	304 SS
8	Stem	1	AISI 4140	17-4 ph	17-4 ph	17-4 ph
9	Thrust Washer	1	PEEK	PEEK	PEEK	PEEK
10	O-Ring	1	Viton	Viton	Viton	Teflon
11	Stem Packing	1	Graphite	Graphite	Graphite	Graphite
12	Packing Follower	1	304 SS	304 SS	304 SS	304 SS
13	Belleville Washer	1	65Mn Spring Steel	65Mn Spring Steel	65Mn Spring Steel	304 SS
14	Gland Flange	1	WCB	WCB	WCB	WCB
15	Gland Bolt	2	Stainless Steel	Stainless Steel	Stainless Steel	Stainless Steel
16	Handle Nut	1	Carbon Steel	Carbon Steel	Carbon Steel	304 SS
17	Handle	1	Carbon Steel	Carbon Steel	Carbon Steel	304 SS





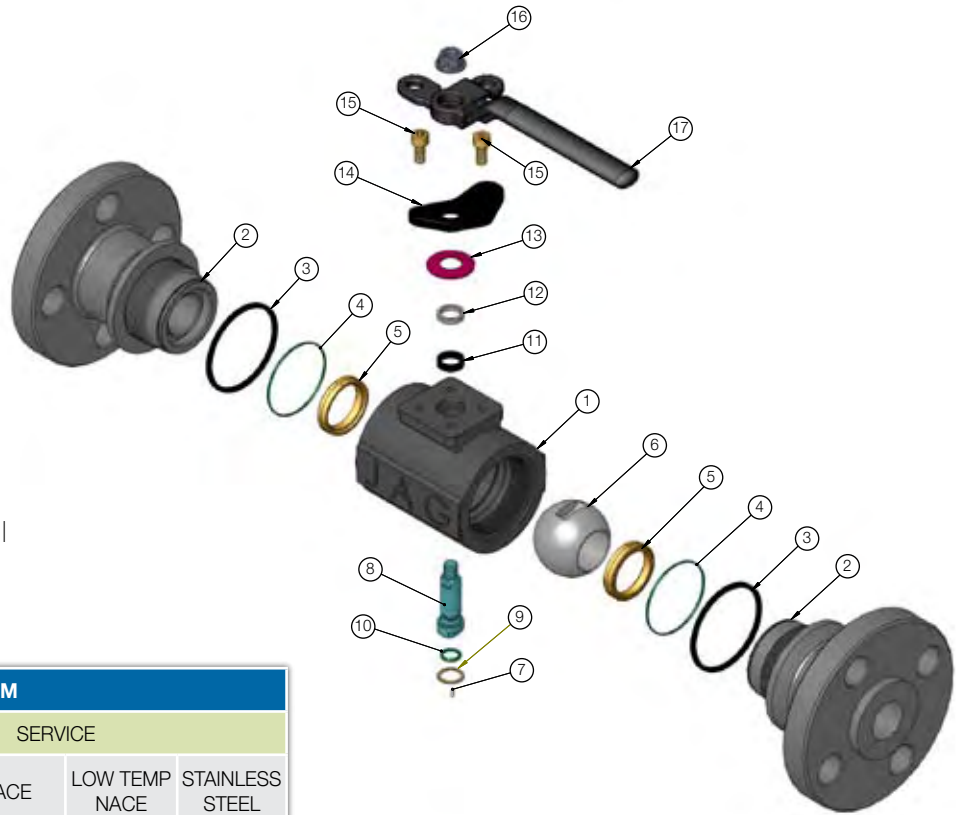
T3 SW 2500 DIMS																						
Size		Bore	A		B (NPT)		B (NPTxSW)		B (SWxSW)		C		D		E		Weight (NPT)		Weight (SW)		Weight (NPTxSW)	
in	mm	FP/ RP	in	mm	in	mm	in	mm	in	mm	in	mm	in	mm	in	mm	lbs.	kg.	lbs.	kg.	lbs.	kg.
1/4"	6.4	FP	0.50	12.7	3.86	98	4.44	112.8	5.00	127.0	3.26	82.8	6.5	165.1	0.87	22.1	3	1.4	4	1.8	4	1.8
3/8"	9.5	FP	0.50	12.7	3.86	98	4.44	112.8	5.00	127.0	3.26	82.8	6.5	165.1	0.87	22.1	3	1.4	4	1.8	3	1.4
1/2"	12.7	FP	0.50	12.7	4.37	111	4.69	119.1	5.00	127.0	3.26	82.8	6.5	165.1	0.87	22.1	3	1.4	4	1.8	4	1.8
3/4"	19.1	RP	0.50	12.7	4.37	111	5.57	141.4	6.75	172.0	3.26	82.8	6.5	165.1	0.94	23.9	4	1.8	5	2.3	4	1.8
		FP	0.75	19.0	4.25	108	5.50	139.7	6.75	172.0	3.67	93.2	8.5	214.9	1.18	30.0	6	2.7	7	3.1	7	3.1
1"	25.4	RP	0.75	19.0	5.24	133	6.00	152.4	6.75	172.0	3.67	93.2	8.5	214.9	1.18	30.0	6	2.7	8	3.6	7.2	3.25
		FP	1.00	25.4	5.39	137	6.07	154.1	6.75	172.0	3.93	99.8	8.5	214.9	1.40	35.6	9	4.1	11	5	10	4.5
1-1/4"	31.8	RP	1.00	25.4	6.43	163	7.46	190.0	8.50	217.0	3.93	99.8	8.5	215.9	1.40	35.6	11.3	5.1	14.3	6.5	13.2	6
		FP	1.50	38.0	6.30	160	7.38	188.0	8.50	217.0	5.30	134.6	10.0	254.0	2.02	51.3	19.5	8.8	24.2	11	22.2	10.1
1-1/2"	38.1	RP	1.00	25.4	6.43	163	7.46	190.0	8.50	217.0	3.93	99.8	8.5	215.9	1.40	35.6	11	5	14	6.36	13	5.9
		FP	1.50	38.0	6.30	160	7.38	188.0	8.50	217.0	5.30	134.6	10.0	254.0	2.02	51.3	19	8.6	24	10.9	22	10
2"	50.8	RP	1.50	38.0	7.40	188	7.96	202.5	8.50	217.0	5.30	134.6	10.0	254.0	2.02	51.3	23	10.4	25	11.3	24	10.9
		FP	2.00	50.8	6.26	159	8.05	204.5	9.85	250.0	6.30	160.0	12.4	315.0	2.61	66.3	33	15	44	20	38	17.2
3"	76.2	RP	2	50.8	10.28	261	12.76	324	11.52	292.5	7.48	190	16.15	410	3.65	70.5	54.5	24.75	66.7	30.3	59.3	26.9

Dimensions +/- 0.059 in (+/- 1.5mm)

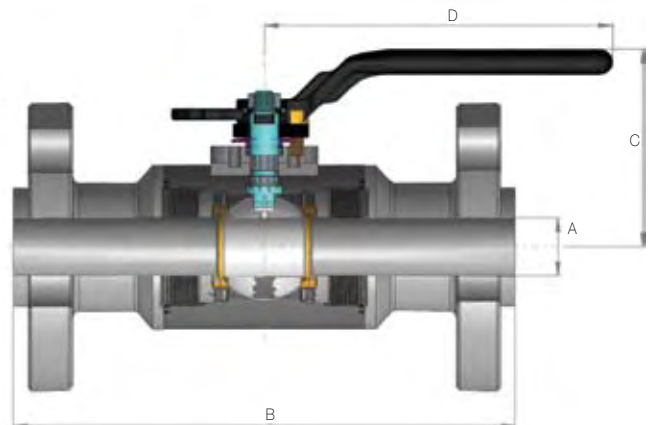
T3 class 150/300/600 Flanged

Product Features

- Forged Body and End Cap
- 3-piece Threaded Construction
- Full Port or Reduced Port
- ASME B16.34
- NACE MR0175
- Blow-out Proof Stem
- Anti-static Design
- ASME B16.10 Face to Face
- Fire Safe to API 607
- Locking Handle
- Dual Stem Seal
- CE Marking / PED to 97/23/EC I



T3 RF 600 BOM						
No.	PART	QTY	SERVICE			
			STANDARD	NACE	LOW TEMP NACE	STAINLESS STEEL
1	Body	1	A105	A105N	A350-LF2	A182-F316
2	End Cap	2	A105	A105N	A350-LF2	A182-F316
3	Gasket	2	Graphite	Graphite	Graphite	Graphite
4	O-Ring	2	Viton	Viton	Viton	Teflon
5	Seat	2	TFM	TFM	TFM	TFM
6	Ball	1	304 SS	316 SS	316 SS	316 SS
7	Anti-Static Spring	1	304SS	304SS	304SS	304SS
8	Stem	1	AISI 4140	17-4 PH	17-4 PH	17-4 PH
9	Thrust Washer	1	TFM	TFM	TFM	TFM
10	O-Ring	1	Viton	Viton	Viton	Teflon
11	Stem Packing	1	Graphite	Graphite	Graphite	Graphite
12	Packing Follower	1	304SS	304SS	304SS	304SS
13	Belleville Washer	1	65Mn Spring Steel	65Mn Spring Steel	65Mn Spring Steel	304SS
14	Gland Flange	1	WCB	WCB	WCB	CF8
15	Gland Bolt	2	A2-70	A2-70	A2-70	A2-70
16	Handle Nut	1	Carbon Steel Plated	Carbon Steel Plated	Carbon Steel Plated	304SS
17	Handle	1	CS Coated	CS Coated	CS Coated	CF8



T3 RF / RTJ 150 DIMS														
Size		Bore	A		B (RF)		B (RTJ)		C		D		Weight	
in	mm		in	mm	in	mm	in	mm	in	mm	in	mm	lb.	kg.
1/2"	12.7	FP	0.5	12.7	4.25	108			3.3	83.7	6.5	165	4.8	2.2
3/4"	19.1	FP	0.75	19	4.62	117			4.3	109.2	8.46	215	7.5	3.4
		RP	0.5	12.7	4.62	117			3.3	83.7	6.5	165		
1	25.4	FP	1	25.4	5	127	5.5	140	4.6	116.95	8.46	215	11.2	5.1
		RP	0.75	19	5	127	5.5	140	4.3	109.2	8.46	215	14.5	6.6
1-1/2"	38.1	FP	1.5	38	6.5	165	7	178	6.12	155.5	10	255	19	9.2
		RP	1	25.4	6.5	165	7	178	4.6	116.95	8.46	215		
2	50.8	FP	2	50.8	7	178	7.5	191	7.48	190	16.14	410	33.9	15.4
		RP	1.5	38	7	178	7.5	191	6.12	155.5	10	255		
3	76.2	RP	2	50.8	8	203	8.5	216	7.48	190	16.14	410		

Dimensions +/- 0.059 in (+/- 1.5mm)

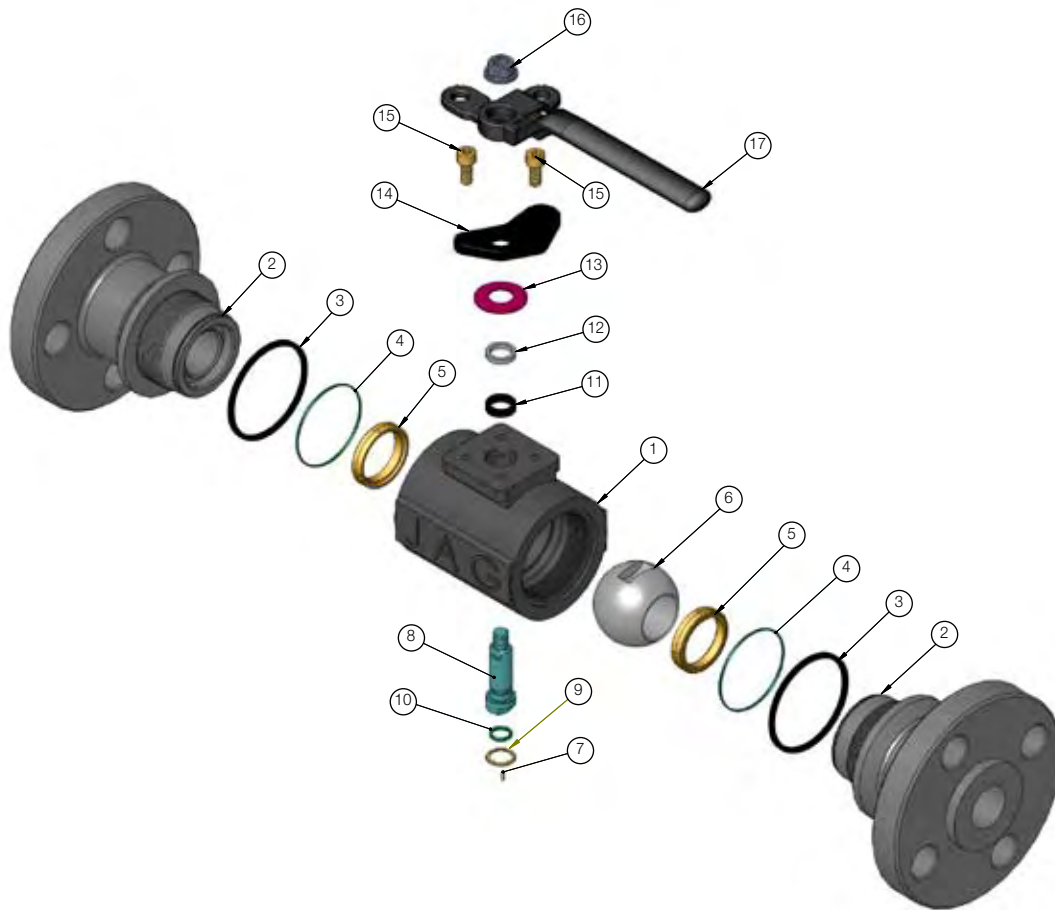
T3 RF / RTJ 300 DIMS														
Size		Bore	A		B (RF)		B (RTJ)		C		D		Weight	
in	mm		in	mm	in	mm	in	mm	in	mm	in	mm	lb.	kg.
1/2"	12.7	FP	0.5	12.7	5.5	140	5.94	151	3.3	83.7	6.5	165	6.6	3
3/4"	19.1	FP	0.75	19	6	152	6.5	165	4.3	109.2	8.46	215	11.5	5.2
		RP	0.5	12.7	6	152	6.5	165	3.3	83.7	6.5	165	8.8	4
1	25.4	FP	1	25.4	6.5	165	7	178	4.6	116.95	8.46	215	14	6.4
		RP	0.75	19	6.5	165	7	178	4.3	109.2	8.46	215	13.0	5.9
1-1/2"	38.1	FP	1.5	38	7.5	190	8	203	6.12	155.5	10	255	26	11.8
		RP	1	25.4	7.5	190	8	203	4.6	116.95	8.46	215	21.8	9.9
2	50.8	FP	2	50.8	8.5	216	9.12	231.5	7.48	190	16.14	410	41.4	18.8
		RP	1.5	38	8.5	216	9.12	231.5	6.12	155.5	10	255	32.4	14.7
3	76.2	RP	2	50.8	11.12	282	11.74	298	7.48	190	16.14	410	64.5	29.3

Dimensions +/- 0.059 in (+/- 1.5mm)

T3 RF / RTJ 600 DIMS														
Size		Bore	A		B (RF)		B (RTJ)		C		D		Weight	
in	mm		in	mm	in	mm	in	mm	in	mm	in	mm	lb.	kg.
1/2"	12.7	FP	0.5	12.7	6.5	165	6.44	163.5	3.3	83.7	6.5	165	7.7	3.5
3/4"	19.1	FP	0.75	19	7.5	191	7.5	191	4.3	109.2	8.46	215	13.2	6
		RP	0.5	12.7	7.5	191	7.5	191	3.3	83.7	6.5	165	10.6	4.8
1	25.4	FP	1	25.4	8.5	216	8.5	216	4.6	116.95	8.46	215	17	7.7
		RP	0.75	19	8.5	216	8.5	216	4.3	109.2	8.46	215	15.9	7.2
1-1/2"	38.1	FP	1.5	38	9.5	241	9.5	241	6.12	155.5	10	255	32.2	14.6
		RP	1	25.4	9.5	241	9.5	241	4.6	116.95	8.46	215	26.4	12
2	50.8	FP	2	50.8	11.5	292	11.62	295	7.48	190	16.14	410	50.7	23
		RP	1.5	38	11.5	292	11.62	295	6.12	155.5	10	255	41	18.6
3	76.2	RP	2	50.8	14	356	14.12	359	7.48	190	16.14	410	82.4	37.4

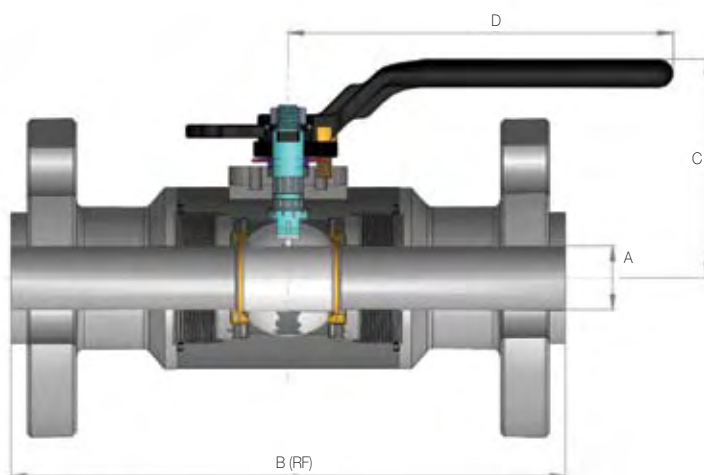
Dimensions +/- 0.059 in (+/- 1.5mm)

T3 class 900/1500/2500 Flanged



Product Features

- Forged Body and End Cap
- 3-piece Threaded Construction
- Full Port or Reduced Port
- ASME B16.34
- NACE MR0175
- Blow-out Proof Stem
- Anti-static Design
- ASME B16.10 Face to Face
- Fire Safe to API 607
- Locking Handle
- Dual Stem Seal
- CE Marking / PED to 97/23/EC



T3 RF & RTJ 900/1500 BOM						
No.	PART	QTY	SERVICE			
			STANDARD	NACE	LOW TEMP NACE	STAINLESS STEEL
1	Body	1	A105	A105N	A350-LF2	A182-F316
2	End Cap	2	A105	A105N	A350-LF2	A182-F316
3	Gasket	2	Graphite	Graphite	Graphite	Graphite
4	O-Ring	2	Viton	Viton	Viton	Teflon
5	Seat	2	TFM	TFM	TFM	TFM
6	Ball	1	304 SS	316 SS	316 SS	316 SS
7	Anti-Static Spring	1	304 SS	316 SS	316 SS	316 SS
8	Stem	1	AISI 4140	17-4 PH	17-4 PH	17-4 PH
9	Thrust Washer	1	TFM	TFM	TFM	TFM
10	O-Ring	1	Viton	Viton	Viton	Teflon
11	Stem Packing	1	Graphite	Graphite	Graphite	Graphite
12	Packing Follower	1	304 SS	304 SS	304 SS	304 SS
13	Belleville Washer	1	65Mn Spring Steel	65Mn Spring Steel	65Mn Spring Steel	304 SS
14	Gland Flange	1	WCB	WCB	WCB	CF8
15	Gland Bolt	2	SS	SS	SS	SS
16	Handle Nut	1	CS Coated	CS Coated	CS Coated	304SS
17	Handle	1	CS Coated	CS Coated	CS Coated	304 SS

T3 RF & RTJ 2500 BOM						
No.	PART	QTY	SERVICE			
			STANDARD	NACE	LOW TEMP NACE	STAINLESS STEEL
1	Body	1	A105	A105N	A350-LF2	A182-F316
2	End Cap	2	A105	A105N	A350-LF2	A182-F316
3	Gasket	2	Graphite	Graphite	Graphite	Graphite
4	O-Ring	2	Viton	Viton	Viton	Teflon
5	Seat	2	PEEK	PEEK	PEEK	PEEK
6	Ball	1	17-4 PH	17-4 PH	17-4 PH	17-4 PH
7	Anti-Static Spring	1	304SS	304SS	304SS	304SS
8	Stem	1	AISI 4140	17-4 PH	17-4 PH	17-4 PH
9	Thrust Washer	1	PEEK	PEEK	PEEK	PEEK
10	O-Ring	1	Viton	Viton	Viton	Teflon
11	Stem Packing	1	Graphite	Graphite	Graphite	Graphite
12	Packing Follower	1	304 SS	304 SS	304 SS	304 SS
13	Belleville Washer	1	304 SS	304 SS	304 SS	304 SS
14	Gland Flange	1	WCB	WCB	WCB	CF8
15	Gland Bolt	2	SS	SS	SS	SS
16	Handle Nut	1	CS Coated	CS Coated	CS Coated	304 SS
17	Handle	1	CS Coated	CS Coated	CS Coated	304 SS

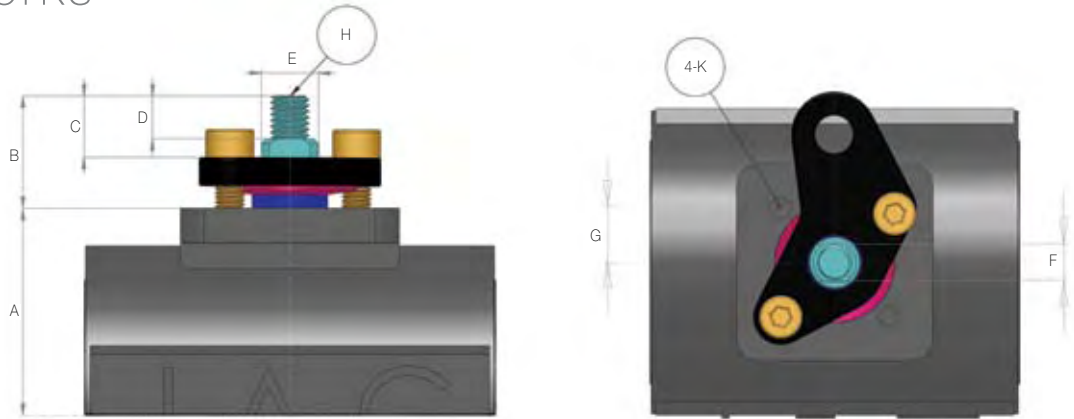
T3 RF / RTJ 1500 DIMS														
Size		Bore	A		B (RF)		B (RTJ)		C		D		Weight	
in	mm		in	mm	in	mm	in	mm	in	mm	in	mm	lb.	kg.
1/2"	12.7	FP	0.5	12.7	8.5	216	8.5	216	4.45	113	7.28	185	13.7	6.2
3/4"	19.1	FP	0.75	19	9	229	9	229	5.63	143	8.46	215	17.6	8
		RP	0.5	12.7	9	229	9	229	4.45	113	7.28	185	16.1	7.3
1	25.4	FP	1	25.4	10	254	10	254	5.63	143	8.46	215	25.8	11.7
		RP	0.75	19	10	254	10	254	5.63	143	8.46	215	24.2	11
1-1/2"	38.1	FP	1.5	38	12	305	12	305	6.32	160.5	10.03	255	44	20
		RP	1	25.4	12	305	12	305	5.63	143	8.46	215	39.0	17.7
2	50.8	FP	2	50.8	14.5	368	14.62	371	7.48	190	16.14	410	84.1	38.2
		RP	1.5	38	14.5	368	14.62	371	6.32	160.5	10.03	255	72.8	33
3	76.2	RP	2	50.8	18.5	470	18.62	473	7.48	190	16.14	410	141.4	64.2

Dimensions +/- 0.059 in (+/- 1.5mm)

T3 RF / RTJ 2500 DIMS														
Size		Bore	A		B (RF)		B (RTJ)		C		D		Weight	
in	mm		in	mm	in	mm	in	mm	in	mm	in	mm	lb.	kg.
1/2"	12.7	FP	0.5	12.7	10.38	264	10.38	264	4.45	113	7.28	185	21.2	9.6
3/4"	19.1	FP	0.75	19	10.75	273	10.75	273	5.63	143	8.46	215	24	10.1
		RP	0.5	12.7	10.75	273	10.75	273	4.45	113	7.28	185	21.6	9.8
1	25.4	FP	1	25.4	12.12	308	12.12	308	5.63	143	8.46	215	35	15.1
		RP	0.75	19	12.12	308	12.12	308	5.63	143	8.46	215	33.3	15.1
1-1/2"	38.1	FP	1.5	38	15.12	384	15.24	387	6.32	160.5	10.03	255	73.1	33.2
		RP	1	25.4	15.12	384	15.24	387	5.63	143	8.46	215	64.1	29.1
2	50.8	FP	2	50.8	17.75	451	17.87	454	7.48	190	16.14	410	123.3	56
		RP	1.5	38	17.75	451	17.87	454	6.32	160.5	10.03	255	104.8	47.6
3	76.2	RP	2	50.8	22.75	578	23	584	7.48	190	16.14	410	227.8	103.4

Dimensions +/- 0.059 in (+/- 1.5mm)

T3 topworks



Top Works																	
Size / FP or RP	A		B		C		D		E		F		G		H	K	ISO 5211
	in	mm	in	mm	in	mm	in	mm	in	mm	in	mm	in	mm	mm	mm	Mounting
1/4" FP	0.98	25	0.75	19	0.42	10.7	0.28	7.2	0.47	12	0.26	6.5	0.5	12.7	M6X1	M6X1-6H	F03
3/8 FP	0.98	25	0.75	19	0.42	10.7	0.28	7.2	0.47	12	0.26	6.5	0.5	12.7	M6X1	M6X1-6H	F03
1/2" FP	0.98	25	0.75	19	0.42	10.7	0.28	7.2	0.47	12	0.26	6.5	0.5	12.7	M6X1	M6X1-6H	F03
3/4" RP	0.98	25	0.75	19	0.42	10.7	0.28	7.2	0.47	12	0.26	6.5	0.5	12.7	M6X1	M6X1-6H	F03
3/4" FP	1.4	35.5	0.94	24	0.55	14	0.35	9	0.47	12	0.33	8.5	0.5	12.7	M8X1.25	M6X1-6H	F03
1" RP	1.4	35.5	0.94	24	0.55	14	0.35	9	0.47	12	0.33	8.5	0.5	12.7	M8X1.25	M6X1-6H	F03
1" FP	1.7	43.3	1.1	28	0.55	14	0.35	9	0.47	12	0.33	8.5	0.5	12.7	M8X1.25	M6X1-6H	F03
1-1/2" RP	1.7	43.3	1.1	28	0.55	14	0.35	9	0.47	12	0.33	8.5	0.5	12.7	M8X1.25	M6X1-6H	F03
1-1/2" FP	2.24	57	1.3	33.5	0.79	20	0.43	11	0.75	19	0.43	11	0.97	24.7	M10X1.5	M10X1.5-6H	F07
2" RP	2.24	57	1.3	33.5	0.79	20	0.43	11	0.75	19	0.43	11	0.97	24.7	M10X1.5	M10X1.5-6H	F07
2" FP	3.03	77	1.89	48	1.18	30	0.71	18	0.98	25	0.59	15	0.97	24.7	M14X2	M10X1.5-6H	F07
3" RP	3.03	77	1.89	48	1.18	30	0.71	18	0.98	25	0.59	15	0.97	24.7	M14X2	M10X1.5-6H	F07

T3 break torques & mounting pattern

Break Torque Data																				
Torque in/lbs	PSI	285		740		1000		1480		2000		2220		30000		3705		6170		
	ASME Class	150		300		600		900		1500		2500								
		in/lb	N-M	in/lb	N-M	in/lb	N-M	in/lb	N-M	in/lb	N-M	in/lb	N-M	in/lb	N-M	in/lb	N-M	in/lb	N-M	in/lb
1/2" bore	TFM (Teflon)	50	6	56	6	62	7	80	9	92	10	110	12	120	14	135	15	-	-	
	Delrin	66	8	66	8	72	8	80	9	95	11	102	12	120	14	135	15	-	-	
	PEEK	80	9	93	11	112	13	125	14	140	16	145	16	160	18	198	22	240	27	
3/4" bore	TFM (Teflon)	98	11	105	12	115	13	150	17	175	20	195	22	225	25	230	26	-	-	
	Delrin	76	9	93	11	115	13	120	14	135	15	146	17	159	18	185	21	-	-	
	PEEK	175	20	240	27	275	31	309	35	335	38	345	39	350	40	370	42	395	45	
1" bore	TFM (Teflon)	110	12	120	14	149	17	160	18	172	19	190	22	220	25	280	32	-	-	
	Delrin	110	12	120	14	149	17	160	18	175	20	185	21	200	23	210	24	-	-	
	PEEK	265	30	280	32	285	32	295	33	325	37	345	39	365	41	410	46	690	78	
1-1/2" bore	Delrin	265	30	309	35	375	42	510	58	700	79	740	84	850	96	960	109	-	-	
	PEEK	584	66	625	71	700	79	805	91	835	94	865	98	920	104	1025	116	1200	136	
2" bore	Delrin	690	78	785	89	940	106	1210	137	1490	168	1650	186	1940	219	2020	228	-	-	
	PEEK	1150	130	1390	157	1640	185	1910	216	2110	238	2225	251	2610	295	2715	307	4050	458	

All above torques are based upon clean liquid service. Factors such as temperature, number of cycles and media will effect torque and may require additional safety factors.